

March 2019

MONDAY	TUESDAY	WEDNESDAY	THURSDAY	FRIDAY
				1
4 Longshore Classroom 0800 WGMA Hazmat Classroom 1300 WGMA	5 Yard Tractor Classroom 0800 WGMA Forklift Classroom 1300 WGMA	6 Heavy Lift/Top Loader Classroom 0800 WGMA Lashing Classroom 1300 WGMA	7 RORO Classroom 0800 WGMA Maritime Supervisory Skills 1300 WGMA	8
11	12	13	14 Longshore Skill Classroom 0800 Freeport Hazmat Classroom 1300 Freeport edited 2/8/2019	15 Maritime Supervisory Classroom 0800 Freeport RORO Classroom 1300 Freeport edited 2/8/2019
18 Longshore Classroom 0800 Lake Charles Hazmat Classroom 1300 Lake Charles Yard Tractor Classroom 1600 Lake Charles edited 3-11-19	19 Forklift Classroom 0800 Lake Charles RORO Classroom 1300 Lake Charles Heavy Lift/Top Loader Classroom 1600 Lake Charles edited 3-11-19	20 Lashing Classroom 0800 Lake Charles Maritime Supervisory Skills 1300 Lake Charles edited 3-11-19	21	22 Management Hazmat Class 0900 WGMA edited 2/11/19
25	26	27	28	29
		NOTES: Check back frequently. New classes will be posted as soon as they are available. Please be sure to have all prerequisites and requirements completed before your training class. Thank you.		

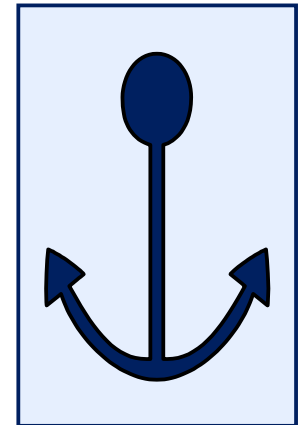


WGMA
 1717 Turning Basin
 Suite 200
 Houston, TX 77029

 PHONE:
 713.678.7655
 FAX: 855.715.1717

April 2019

MONDAY	TUESDAY	WEDNESDAY	THURSDAY	FRIDAY
1 Longshore Skills Classroom 0800 WGMA Hazmat Classroom 1300 WGMA	2 Yard Tractor Classroom 0800 WGMA Forklift Classroom 1300 WGMA	3 Heavy Lift/Top Loader Classroom 0800 WGMA Lashing Classroom 1300 WGMA	4 RORO Classroom 0800 WGMA Maritime Supervisory Skills Classroom 1300 WGMA	5
8	9	10	11	12
15 Longshore Skills Classroom 0800 Freeport Hazmat Classroom 1300 Freeport	16 Yard Tractor Classroom 0800 Freeport Forklift Classroom 1300 Freeport	17 Heavy Lift/Top Loader Classroom 0800 Freeport	18	19
22	23	24	25	26
29	30	NOTES: Check back frequently. New classes will be posted as soon as they are available. Please be sure to have all prerequisites and requirements completed before your training class. Thank you.		



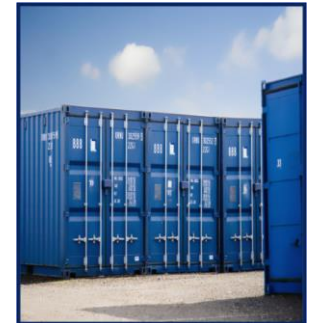
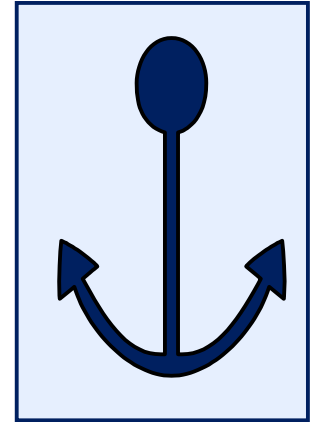
WGMA
 1717 Turning Basin
 Suite 200
 Houston, TX 77029

PHONE:
 713.678.7655
FAX: 855.715.1717
www.wgma.org



May 2019

MONDAY	TUESDAY	WEDNESDAY	THURSDAY	FRIDAY
		1	2	3
6 Longshore Skills Classroom 0800 WGMA Hazmat Classroom 1300 WGMA	7 Yard Tractor Classroom 0800 WGMA Forklift Classroom 1300 WGMA	8 Lashing Classroom 0800 WGMA RORO Classroom 1300 WGMA	9 Heavy Lift/Top Loader Classroom 0800 WGMA Maritime Supervisory Skills Classroom 1300 WGMA	10
13	14	15	16	17
20 Longshore Skills Classroom 0800 Corpus Christi Hazmat Classroom 1300 Corpus Christi	21 Yard Tractor Classroom 0800 Corpus Christi Forklift Classroom 1300 Corpus Christi	22 Lashing Classroom 0800 Corpus Christi Heavy Lift Classroom 1300 Corpus Christi	23 Maritime Supervisory Skills Classroom 0800 Corpus Christi	24
27	28	29	30	31
		NOTES: Check back frequently. New classes will be posted as soon as they are available. Please be sure to have all prerequisites and requirements completed before your training class. Thank you.		

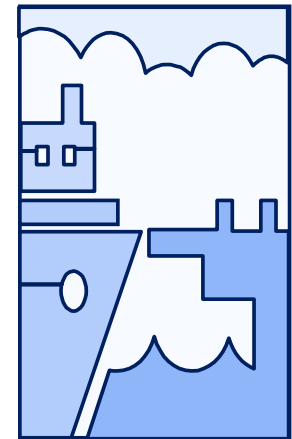
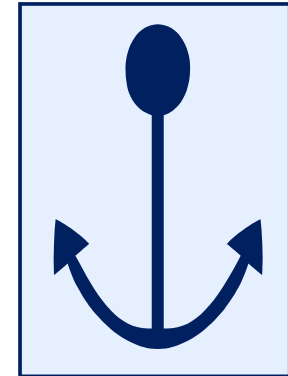


WGMA
 1717 Turning Basin
 Suite 200
 Houston, TX 77029

PHONE:
 713.678.7655
FAX: 855.715.1717
www.wgma.org

June 2019

MONDAY	TUESDAY	WEDNESDAY	THURSDAY	FRIDAY
3	4	5	6	7
10 Longshore Skills Classroom 0800 WGMA Hazmat Classroom 1300 WGMA	11 Yard Tractor Classroom 0800 WGMA Forklift Classroom 1300 WGMA	12 Lashing Classroom 0800 WGMA RORO Classroom 1300 WGMA	13 Heavy Lift/Top Loader Classroom 0800 WGMA Maritime Supervisory Skills Classroom 1300 WGMA	14
17 Longshore Skills Classroom 0800 Beaumont Hazmat Classroom 1300 Beaumont	18 Yard Tractor Classroom 0800 Beaumont Forklift Classroom 1300 Beaumont	19 Heavy Lift Classroom 0800 Beaumont RORO Classroom 1300 Beaumont	20 Maritime Supervisory Skills Classroom 0800 Beaumont	21
24	25	26	27	28
		NOTES: Check back frequently. New classes will be posted as soon as they are available. Please be sure to have all prerequisites and requirements completed before your training class. Thank you.		



WGMA
 1717 Turning Basin
 Suite 200
 Houston, TX 77029

PHONE:
 713.678.7655
FAX: 855.715.1717
www.wgma.org